

1. Identification

FileName: glaciers_cci_iv_rgi03_PALSAR_2007-2011_v151113
Content: Ice velocity map Arctic Canada North **Size:** part1: 620.8 MB
 part2: 134.1 MB
Creators: Tazio Strozzi and Andreas Wiesmann **Institution:** Gamma Remote Sensing
 Gumligen (BE), Switzerland
Created at: 13.11.2015 **Type:** Raster files
Entry-ID: part1: iv_rgi03_004 **Funding:** ESA Glaciers_cci
 part2: iv_rgi03_005

2. Description

Description: This data set provides ice velocity maps for Arctic Canada North (RGI region 03) derived from winter ALOS PALSAR images acquired in Fine Beam Single (FBS) mode between 2007 and 2011.

Methods: Offset fields between pairs of ALOS PALSAR FBS satellite data acquired with a 46-day time interval are employed for the estimation of glacier velocity. Offset tracking measurements made along the SAR slant-range (incidence angle is about 35° for ALOS PALSAR observations) and azimuth directions are combined to retrieve horizontal displacement on the ground. Occasionally, the results are contaminated by ionospheric artefacts ("striking").

References: Glaciers_cci (2015): Climate Research Data Package (CRDP) Technical Document. Prepared by the Glaciers_cci consortium, 20 pp.

Citation: When using this dataset, please cite the above reference (Glaciers_cci 2015). A related journal publication is in preparation.

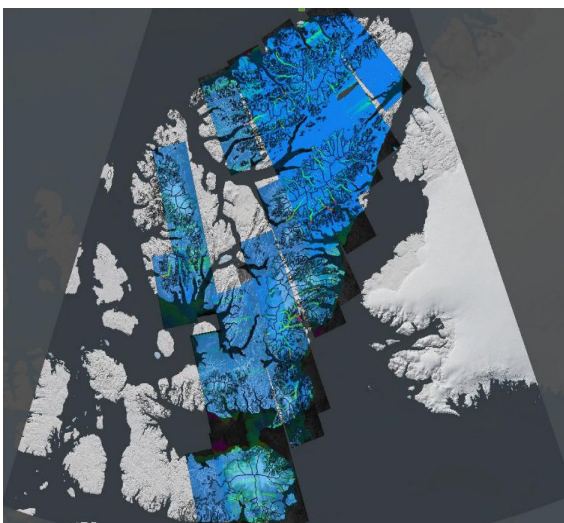
3. Source data

Source: Eoli-sa
Satellites: ALOS
Sensors: PALSAR
Path (range): 65-126
Row (range): 1500-1680

Nr. of scenes: 150 along 13 orbits
Date (range): 30.01.2007 - 07.03.2011
Years total: 4
Product: SLC
Remarks: www.viewfinderpanoramas.org
 used for topographic reference
 RGI 4.0 used for validation

4. Geographic coverage

Country: Canada
Region: Arctic North
RGI Region: 03
Longitude: 95.2-63.7 W
Latitude: 74.5-83.1 N
Projection: UTM zone 17N
Datum: WGS84
Sampling: 100 m



5. Individual data files

Name	Description
IV_RGI14_S1_date1Ttime1_date2Ttime2.300.tif	Quicklook scaled > 300 m/yr
IV_RGI14_S1_date1Ttime1_date2Ttime2.csv	ASCII Table
IV_RGI14_S1_date1Ttime1_date2Ttime2.tif	Geotiff
IV_RGI14_S1_date1Ttime1_date2Ttime2.xml Metadata	Metadata
IV_RGI07_PALSAR_20070130T021621_20070317T021629	
IV_RGI07_PALSAR_20070309T014658_20070424T014703	
IV_RGI07_PALSAR_20070325T024551_20070510T024550	
IV_RGI07_PALSAR_20070405T020145_20070521T020145	
IV_RGI07_PALSAR_20070415T021437_20070531T021437	
IV_RGI07_PALSAR_20070928T013146_20071113T013126	
IV_RGI07_PALSAR_20071007T024117_20071122T024058	
IV_RGI07_PALSAR_20071120T025736_20080105T025711	
IV_RGI07_PALSAR_20071120T025800_20080105T025735	
IV_RGI07_PALSAR_20081115T030744_20081231T030830	
IV_RGI07_PALSAR_20081115T030808_20081231T030854	
IV_RGI07_PALSAR_20110120T010809_20110307T010707	
IV_RGI07_PALSAR_20070401T023630_20070517T023630	
IV_RGI07_PALSAR_20101219T022456_20110203T022401	
IV_RGI07_PALSAR_20101230T031726_20110214T031628	
IV_RGI07_PALSAR_20101230T031823_20110214T031725	